

# BROCHURE

## 3 SAFE USE OF PESTICIDES

# INSTRUCTIONS DURING APPLICATION



This brochure is made available by the COLEAD to fruit and vegetable producers and exporters in the ACP (Africa, Caribbean, Pacific) countries. The instructions illustrated in the following pages are meant for those who supervise and are responsible for the application of pesticides.

This brochure contains instructions for planning and calibration and environmental protection recommendations. It explains a simple method for determining accurately the volume applied per hectare and the product dosage to be prepared for effective treatment.

Brochures on other subject areas are also available from ([www.colead.link](http://www.colead.link)).

This publication has been developed by the Fit For Market + programme, implemented by COLEAD within the framework of the Development Cooperation between the Organisation of African, Caribbean and Pacific States (OACPS) and the European Union (EU). It should be noted that the information presented does not necessarily reflect the views of the donors.

This publication is part of a collection of COLEAD resources, which consists of online and offline educational and technical tools and materials. All of these tools and methods are the result of more than 20 years of experience and have been developed progressively through COLEAD's technical assistance programmes, notably in the framework of development cooperation between the OACPS and the EU.

The use of particular designations of countries or territories does not imply any judgement on the part of COLEAD concerning the legal status of these countries or territories, their authorities and institutions or the delimitation of their frontiers.

The content of this publication is provided in a «currently available» form. COLEAD makes no warranty, direct or implied, as to the accuracy, completeness, reliability or suitability of the information at a later date. COLEAD reserves the right to change the content of this publication at any time without notice. The content may contain errors, omissions or inaccuracies, and COLEAD cannot guarantee the accuracy or completeness of the content.

COLEAD cannot guarantee that the content of this publication will always be current or suitable for any particular purpose. Any use of the content is at the user's own risk and the user is solely responsible for the interpretation and use of the information provided.

COLEAD accepts no liability for any loss or damage of any kind arising from the use of, or inability to use, the content of this publication, including but not limited to direct, indirect, special, incidental or consequential damages, loss of profits, loss of data, loss of opportunity, loss of reputation, or any other economic or commercial loss.

This publication may contain hyperlinks. Links to non-COLEAD sites/platforms are provided solely for the information of COLEAD staff, its partner-beneficiaries, its funders and the general public. COLEAD cannot and does not guarantee the authenticity of information on the Internet. Links to non-COLEAD sites/platforms do not imply any official endorsement of, or responsibility for, the opinions, ideas, data or products presented on those sites, or any guarantee as to the validity of the information provided.

Unless otherwise stated, all material contained in this publication is the intellectual property of COLEAD and is protected by copyright or similar rights. As this content is compiled solely for educational and/or technical purposes, the publication may contain copyrighted material, the further use of which is not always specifically authorised by the copyright owner.

Mention of specific company or product names (whether or not indicated as registered) does not imply any intention to infringe proprietary rights and should not be construed as an endorsement or recommendation by COLEAD.

This publication is publicly available and may be freely used provided that the source is credited and/or the publication remains hosted on one of COLEAD's platforms. However, it is strictly forbidden for any third party to state or imply publicly that COLEAD is participating in, or has sponsored, approved or endorsed the manner or purpose of the use or reproduction of the information presented in this publication, without prior written consent from COLEAD. The use of the contents of this publication by any third party does not imply any affiliation and/or partnership with COLEAD.

Similarly, the use of any COLEAD trademark, official mark, official emblem or logo, or any other means of promotion or advertising, is strictly prohibited without the prior written consent of COLEAD. For more information, please contact COLEAD at [network@colead.link](mailto:network@colead.link)





## INTRODUCTION

The purpose of this brochure is to provide guidance to producers to spray correctly under proper application conditions and to react effectively in case of accidental exposure.

It is very important for the spray operator to use the right equipment, to check the proper working of the spraying device, and to take account of the wind direction at the time of application.

You will find in this brochure the instructions that should be followed to enable pesticides to be applied safely and effectively.

## LIST OF INSTRUCTIONS TO BE OBSERVED DURING APPLICATION

### PROTECT THOSE AROUND YOU

1. Keep people and animals from entering the field during spraying.
2. Be sure that children, the elderly and pregnant women are kept far from the field.
3. Do not apply pesticides when other work is being done in the field.

### PROTECT YOURSELF

1. Use the protective clothing, gloves, boots, hat or mask, and do not remove even when it is too warm.
2. Spray the mixture in the direction in which the wind is blowing, and move forward with the wind.
3. Do not spray into the wind.

### SPRAY EFFECTIVELY

1. Move forward at the same speed at all times, pumping the sprayer regularly to maintain a constant pressure.
2. Place the nozzle in front of you, at a height that results in a good distribution of the droplets on the plants or on to the ground (approximately 50 cm).
3. Maintain the same application height in relation to the plants throughout the spraying process.

### REACT IN CASE OF CONTACT WITH THE PRODUCT

1. If any of pesticide enters the eyes, rinse immediately with clean water.
2. If the product comes into contact with the skin, immediately wash it off with water.
3. If no water is available, rub the skin with sand, a clean cloth or even grass and rinse as soon as possible.

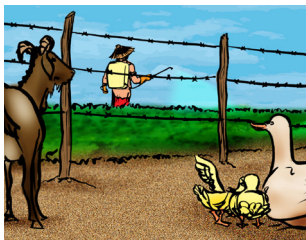
### REACT IN CASE OF SICKNESS – FIRST AID

1. Reassure and calm the person and place them on their side on the ground to prevent choking if vomiting should occur.
2. Free the area in front of the person's face to facilitate breathing.
3. Remove the contaminated clothes.

4. Wash the parts of the body affected with clean water.
5. Do not allow the person to smoke or to drink anything other than water.
6. Take the person immediately to the closest community clinic.
7. Take the product label or container to the clinic to identify the product.

## PROTECT THOSE AROUND YOU

---



- Keep people and animals from entering the field during spraying.



- Be sure that children, the elderly and pregnant women are kept far from the field.



- Do not apply pesticides when other work is being done in the field.

## PROTECT YOURSELF

---



- Use the protective clothing, gloves, boots, hat or mask, and do not remove even when it is too warm.



- Do not spray into the wind.



- Spray the mixture in the direction in which the wind is blowing, and move forward with the wind.

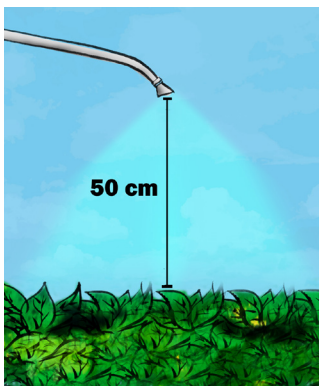


## SPRAY EFFECTIVELY

---



- Move forward at the same speed at all times, pumping the sprayer regularly to maintain a constant pressure.



- Place the nozzle in front of you, at a height that results in a good distribution of the droplets on the plants or onto the ground (approximately 50 cm).



- Maintain the same application height in relation to the plants throughout the spraying process.

## REACT IN CASE OF CONTACT WITH THE PRODUCT

---



- If any of pesticide enters the eyes, rinse immediately with clean water.



- If the product comes into contact with the skin, immediately wash it off with water.



- If no water is available, rub the skin with sand, a clean cloth or even grass and rinse as soon as possible.

## REACT IN CASE OF SICKNESS – FIRST AID

---



- Reassure and calm the person and place them on their side on the ground to prevent choking if vomiting should occur.



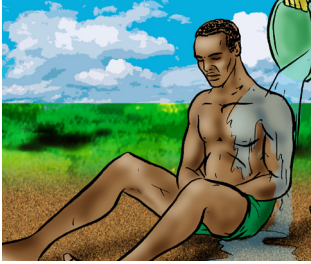
- Free the area in front of the person's face to facilitate breathing.



- Remove contaminated clothing.

## REACT IN CASE OF SICKNESS – FIRST AID

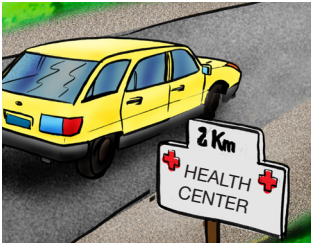
---



- Wash the parts of the body affected with clean water.



- Do not allow the victim to smoke or to drink anything other than water.



- Take the person immediately to the closest community clinic.



- Take the product label or container to the clinic to identify the product.

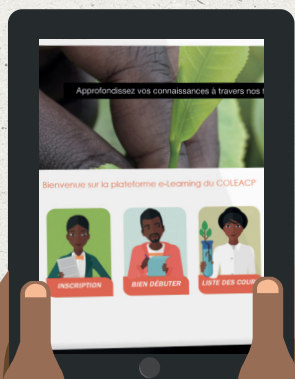
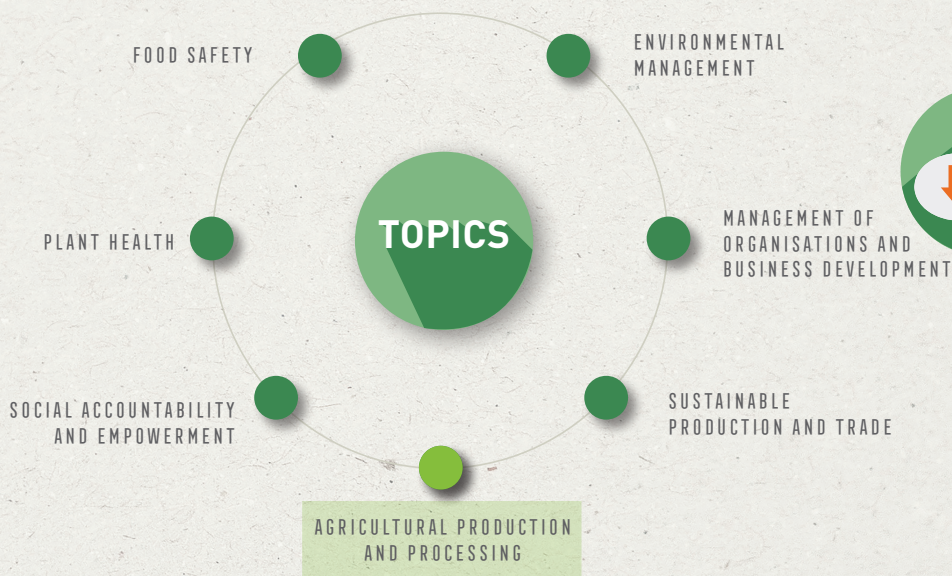




# COLEAD E-LEARNING PLATFORM

RECEIVE YOUR ACCESS TO OUR DISTANCE LEARNING PLATFORM. RESERVED FOR STAKEHOLDERS IN THE AGRICULTURAL SECTOR IN AFRICAN, CARIBBEAN AND PACIFIC COUNTRIES.

TEST AND IMPROVE YOUR KNOWLEDGE  
AT YOUR OWN RHYTHM!



<https://training.colead.link>



# COLEAD

**SUSTAINABLE PRODUCTION  
AND TRADE**

**SOCIAL ACCOUNTABILITY  
AND EMPOWERMENT**

**PLANT HEALTH**

**ENVIRONMENTAL  
MANAGEMENT**

**FOOD SAFETY**

**BUSINESS MANAGEMENT  
AND DEVELOPMENT**

**AGRICULTURAL PRODUCTION  
AND PROCESSING**

**TRAINING  
METHODOLOGY**